

VIBRANT™ PORCELAIN VENEERS

Vibrant™ Veneers. . . the choice of dental professionals for over 20 years.

More than 8,000 beaming smiles.

Only from Rotsaert!



BEFORE



PREPARATION



AFTER

PREPARATION CONSIDERATION FOR PORCELAIN LAMINATE VENEERS

Composite build-up to mimic final shape



Dog-leg preparation interproximal



Porcelain veneers on day of insertion
Note the interproximal finish line



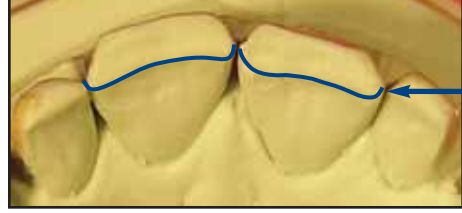
INCISAL EDGE PREPARATION



Incisal edge rounded onto lingual of tooth



Porcelain veneer can be extended 2 mm past incisal



Lingual butt finished with 30° angle to the lingual



Margin following gingival contour

SUGGESTED READINGS:

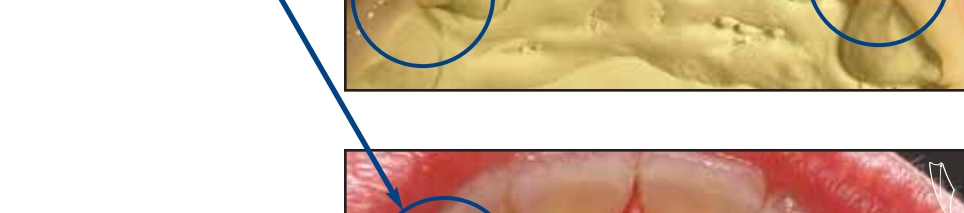
1. "Bonded Porcelain Restorations in the Anterior Dentition: A Biomimetic Approach" by Magne, Pascal; and Belser, Urs. Quintessence Publishing Co, Inc., 4350 Chandler Drive, Hanover Park, IL 60133 Web: www.quintpub.com
2. "Fracture load and mode of failure of ceramic veneers with different preparations" by Castelnuovo J, Tjan AH, Phillips K, Nicholls JJ, Kois JC. J Prosthet Dent. 2000 Feb; 83(2):171-80. University of Washington, School of Dentistry, Seattle, Wash., USA.

CLOSING INTERPROXIMAL SPACES



When closing interproximal space at a 30° angle through to the lingual

Porcelain finished to the lingual of the teeth will create a natural look at the interproximal area



Veneers on day of insertion.

Vibrant™ Porcelain Veneers by Rotsaert

Rotsaert's own Vibrant™ Veneers are layered porcelain which can be produced to a thinness of 0.2 mm. This makes them ideal for vital preparations, producing the most natural-looking veneers attainable. Bondable to enamel, Vibrant™ Veneers are a less invasive preparation than pressed veneers.

Vibrant™ Veneers...

the choice of dental professionals for over 20 years.

More than 8,000 beaming smiles.

Only from Rotsaert!

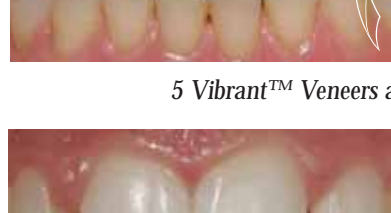
VIBRANT™ PORCELAIN VENEERS



6 Vibrant™ Veneers



5 Vibrant™ Veneers and a Lava™ Crown on 21



4 Vibrant™ Veneers



8 Vibrant™ Veneers



8 Vibrant™ Veneers

* Vibrant™ Veneers is a registered trademark of Rotsaert Dental Laboratory Services Inc. since 1982

* Lava™ is a registered trademark of 3M ESPE

1-800-263-2113

