

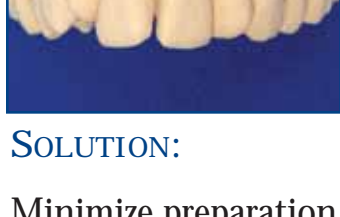
SOLUTIONS 1

VOLUME 1

CREATING PROPER REDUCTION FOR VENEERS USING DIAGNOSTIC WAX UP AS THE STENT.
FIRST DESCRIBED IN DR. GALIP GÜREL'S BOOK, "PORCELAIN LAMINATE VENEERS".

PROBLEM:

Patient has crowding of anteriors but does not want Ortho. Patient is concerned about the four anteriors.



SOLUTION:

Minimize preparation for veneers by using a diagnostic wax up and reduction guide.

In order to align the teeth, reduction has to be made facially on the laterals and the one central (**Orange**).



For tooth width and path of insertion, initial vertical reduction is made (**blue**).



The two initial reduction guides are provided by

RO TSAERT
Dental Laboratory Services Inc.



Wax up after the initial reduction. A putty index fabricated from the wax up is used to form reduction template.

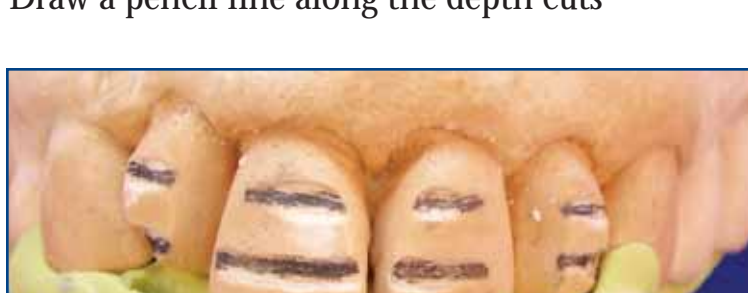


Reduction Template

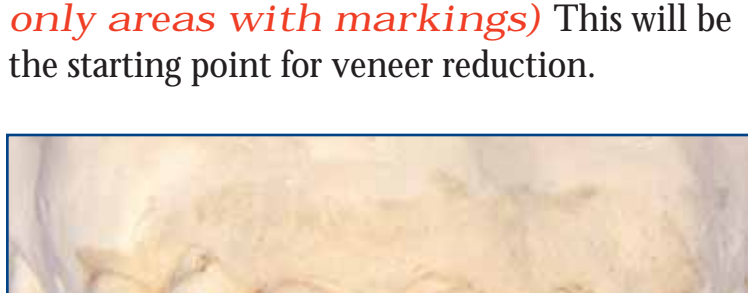
Fill putty matrix with Temporary Bisacryl material. Place in the mouth. Allow to set, creating a duplicate of the wax up.



Depth cuts:
0.3mm at the cervical third
0.5mm incisal third
0.5mm reduction on the incisal edge
Draw a pencil line along the depth cuts



Remove temporary material. Reduce preparation so areas of depth cuts are flush. (**Reduce only areas with markings**) This will be the starting point for veneer reduction.

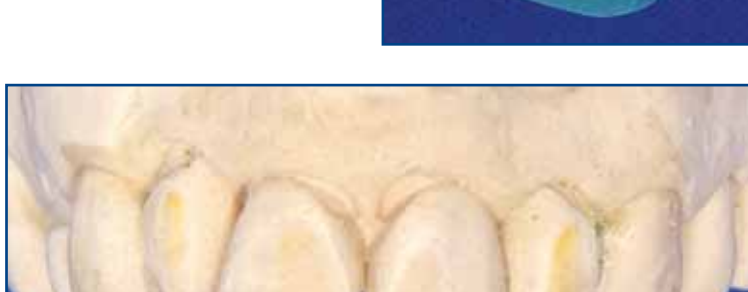


Check reduction of incisal edge, using putty matrix from diagnostic wax up.



Incisal facial reduction, checked with Facial Putty Matrix. (A technique described by Dr. Stephen Phelan.)

Vertical cut of the putty matrix allows preparation to be viewed one tooth at a time.



Initial preparation finished.

This system is for the initial reduction of tooth structure.

It is designed for minimal reduction for porcelain

Vibrant Veneers™

Rotsaert
Dental Laboratory Services Inc.

VIBRANT™
PORCELAIN
VENEERS