

SOLUTIONS 3 VOLUME 3

USING LAVA™ ZIRCONIA CROWN ON A MOLAR.
BEFORE:

Lingual cusp fracture and crown has endo.

Patient does not want a metal crown.



AFTER:

Lava™ Zirconia Crown



Clinical work: Dr. Stephen Phelan

Lab work: Rotsaert Dental Laboratory

PHOTOS FOR SHADE

Initial shade taken of teeth,

occlusal and facial.



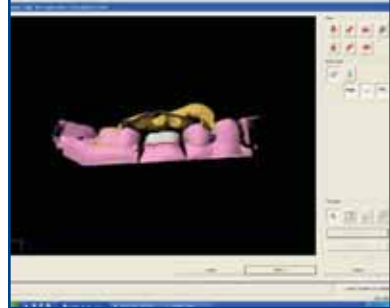
PREPARATION

Rounded line angles and margins

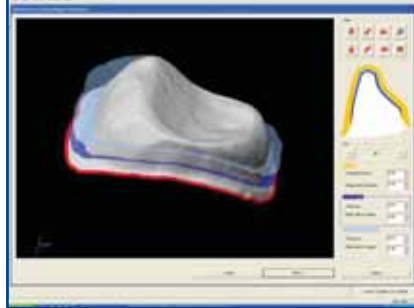
above gingival.



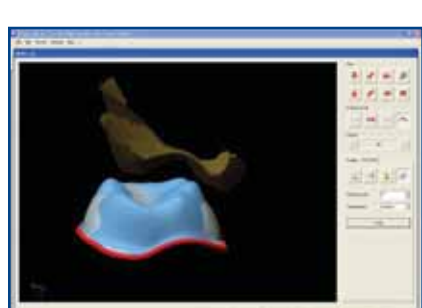
Lava™ CROWN SCAN AND DESIGN



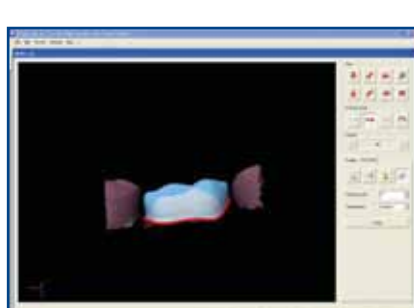
Bite and adjacent teeth



Cement gap and gap expansion



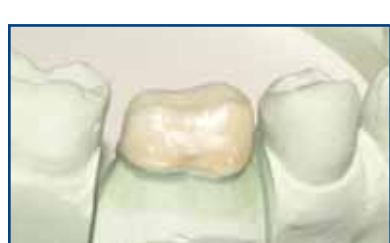
Wax coping with build-up



Wax coping with build-up for porcelain support

Lava™ PORCELAIN BUILD-UP OF

TINTED COPING



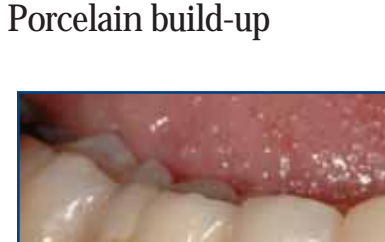
Tinted Lava™ coping



Porcelain build-up



Finished crown on model



Finished crown cemented

Lava™ All-Zirconia Monolithic Restorations



This restoration is for posteriors only.

The Monolithic character only allows the crown to be one colour from the stain.

The florescence comes from a light wash of clear porcelain that is placed over the surface of the crown and baked in the porcelain oven.

The crown is then finished and ready for insertion.

Surface stain is then applied for characterization.

The crown is then finished and ready for insertion.

The wear and strength of these crowns is detailed in the 3M hand out.

